

## DIGITAL CAP TORQUE METER

Precision

# NEXTECH<sup>®</sup>



- ★ Features a 0.5% of full scale accuracy
- ★ Accommodate different size & shape of samples
- ★ Peak and Track Mode selectable
- ★ All major units of measurement.
- ★ Analog bar provide easy view.
- ★ User friendly screen and menu
- ★ Rechargeable battery and light weight for mobility

Model CTS

CTS- Cap Torque Tester, is suitable for all type of industries that have to deal with the screw cap closure. It is reliable and accurate testing equipment for packaging, food and beverage, pharmaceuticals.. etc.. The CTS also provides the user friendly menu and easy view analog. Available in capacity 1, 5, 10, and 20 N.m.

Please contact our representative for more information.



**D.C.I.** GROUP

## Specifications

### Environment:

Operating condition:	For indoor use only.
Operating temperature:	0 °C to 50 °C.
Storage temperature:	-15 °C to 65 °C.
Humidity:	Maximum 70% Relative.

### Accuracy

Accuracy(Combined error):	± 0.5 % of full-scale.
Creep:	± 0.02 % of full-scale.
Non-Linearity:	± 0.02 % of full-scale.
Temperature shift at zero load:	± 0.02 % of full-scale/°C.

### Dimension & Weight

size :	160 x 285 x 127 mm.
Weight:	2.8 kg.

### Mechanical Rating

Maximum torque:	120% of rated capacity stated.
Maximum mounting torque:	150% of rated capacity.

### Electrical:

Charger rating:	500mA 12 Volts DC.
Charging Time:	4-6 Hours for full charge.
ADC Sampling Rate:	2,000 Hz
Peak Capture Rate:	0.010 S.
Output RS232C:	PS2 Connector, 8 Data bits, 1 Start bit, 1 Stop bit, no parity, 38400 baud rate.
Display:	128x64 pixel dot matrix display.
Unit of measurement:	N.m, kgf.cm, kgf.m, in.lbs, ft.lbs
Mode of measurement:	Track, Peak, First-Peak.
Minimum torque:	Readable at min 5% of F.S
Auto Reset Range:	Adjustable 2 to 100% of F.S
Pass-Fail Range:	Adjustable 2 to 100% of F.S

## Application Software

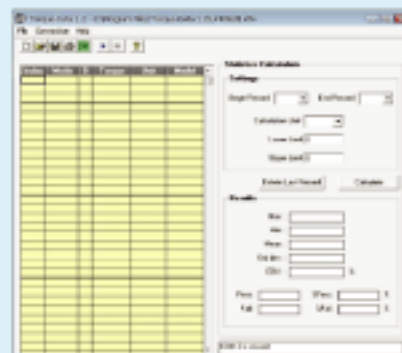
This is a utility software program provided by NEXTECH for DTX and CTS Cap Torque Tester. Torque Data collects, analyzes and manages data. It is designed for comparing similar characteristics, such as maximum torque, from a batch of tests. Torque-Data also accepts the memory dumps from the DTX or CTS internal database.

- Requires little set up – only the COM port
- General Statistics
- Pass/Fail
- One button export to Excel

### System Requirements

A desktop PC or a laptop computer with or higher

- Intel Pentium, AMD, Celeron Processor
- 20 MB of available hard-disk space
- Minimum Microsoft Windows 98 SE (or later versions) installed
- 64-128 MB RAM (Windows 98 SE)
- 128-256 MB RAM (Windows 2000 or Windows XP)
- CD ROM drive
- Suitable serial port (COM1-COM6) must be available to connect
- Serial cable provided by NEXTECH for connection



## Capacity and Divisions

Model	N-m	kgf-cm	kgf-m	in-lbf	ft-lbf
CTS 0.5	0.5 × 0.0001	5.099 × 0.001	0.0509 X 0.0001	4.425 × 0.001	0.3687 × 0.0001
CTS 1	1 × 0.0002	10.2 × 0.002	0.1020 X 0.0001	8.850 × 0.002	0.7375 × 0.0002
CTS 5	5 × 0.001	50.99 × 0.01	0.5099 × 0.1e-3	44.25 × 0.01	3.687 × 0.001
CTS 10	10 × 0.002	102 × 0.02	1.02 × 0.0002	88.50 × 0.02	7.375 × 0.002
CTS 20	20 × 0.005	204 × 0.05	2.04 × 0.0005	177.0 × 0.05	14.75 × 0.005